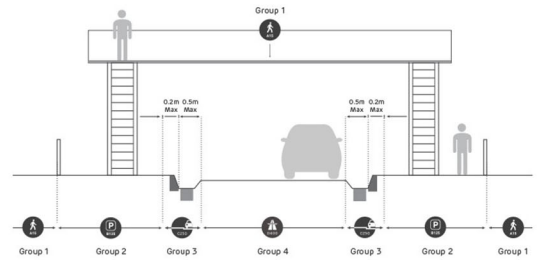


## Load Classification as per EN 124

### Table of available sizes with load capacity of Manhole covers, Grating & Load classification as per sizes load

Group	Traffic Description	Class	Proof Load KN	Proof Load lbs
1	Areas Which can only be used by pedestrians	A15	15KN	3,375 lbs
2	Footways, Pedestrian areas Parks & Car Parking	B125	125KN	28,100 lbs
3	Gullytops for curbside of roads	C250	250KN	56,200 lbs
4	Carriageways of roads, hard shoulder & Parking areas	D400	400KN	89,925 lbs
5	Areas of imposing high wheel roads e.g. Docks & Aircraft	E600	600KN	1,34,885 lbs



**ELD-2.5 T/A15** Suitable for residential & instructional complexes with pedestrian & light motor vehicle traffic. These covers can also be used for inspection chambers

**LD- 5T** Suitable for use in areas of LMV (upto SUC class & less than 3 tons) vehicular traffic.e.g. underground parking or parking decks in residential areas.

**MD-10 T/B125** Suitable for the use in service lanes / road, on pavements, for use under duty vehicular traffic including car parking areas.

**HD-20T / C250** Suitable for use in institutional/Commercial areas/carriage ways/city truck roads/bus terminal, with heavy duty vehicular traffic of wheel loads between 5-10 tons, like buses, trucks and parking areas and where the manhole chambers are located in between the pavement and in the middle of the road.

**EHD-40T/D400** Suitable for use in carriageways in commercial/industrial/port areas, near warehouses/godowns where frequent loading and unloading of trucks/trailers are common, with slow to fast moving traffic of the types with wheel loads upto 11.5 tons irrespective of the location of the manhole covers.

### Standard Sizes with Available Grade

	Size/Load	ELD-2.5 T/A15	LD 5T	MD 10T/B125	HD-20T /C250	EHD-40T/D400
Manhole Covers with Frame	300*300	✓			✓	
	450*450	✓	✓	✓	✓	
	450*600	✓	✓	✓	✓	
	450*900	✓	✓	✓	✓	✓
	600*600	✓	✓	✓	✓	✓
	600*900	✓	✓	✓	✓	✓
	900*900	✓	✓	✓	✓	
	900*1200	✓	✓	✓	✓	✓
	900*1400	✓	✓	✓	✓	✓
	Dia 530	✓	✓	✓	✓	✓
	Dia 600	✓	✓	✓	✓	✓
Dia 690			✓	✓		
Gratings with Frame	300*300	✓	✓			
	450*450		✓	✓		
	500*550	✓	✓			
	500*600		✓	✓		
	600*600	✓	✓	✓	✓	
Gratings W/O Frame	600*1170		✓	✓		
	300*600	✓	✓			
	500*550	✓	✓			
	450*450	✓	✓	✓	✓	

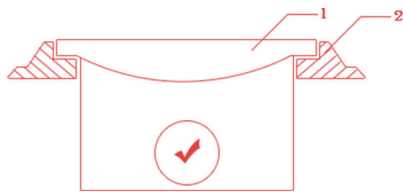
## Installation Technique

### Installation Procedure for FRP Manhole covers, Gratings & Tank Covers

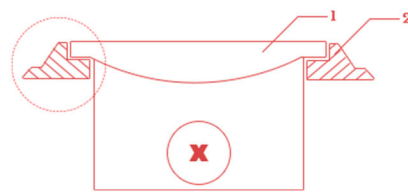
Manhole cover & frame should be handled very carefully to avoid damage of corners and edges.

#### Step 1

Clear opening of the frame should not be smaller than that of the chamber. Make sure that the top level of the frame should match the road.



**Correct**  
1. Manhole cover



**Wrong**  
2. Frame

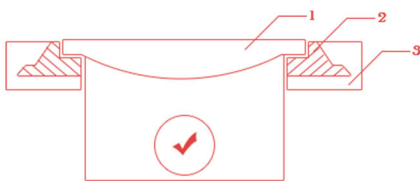
### Installation Instructions

Prepare concrete bed considering height of the frame.

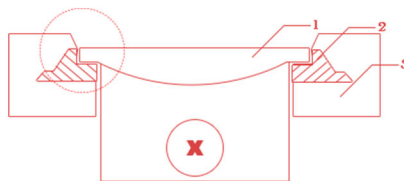
Frame should be embedded in minimum M-20 grade concrete.

In case a section of frame is not supported with solid ground, a RCC beam (Min M-20 grade) not less than 100 mm in height must be installed for resting below unsupported section.

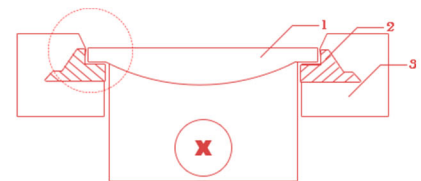
A frame should be allowed to set in concrete for a minimum time of 48 hours before its use.



**Correct**



**Wrong**



**Wrong**

## INTRODUCING

**FRP TOILET**



**FRP FLOORING**



**FRP RAILING**



**FRP TREE GRATING**

